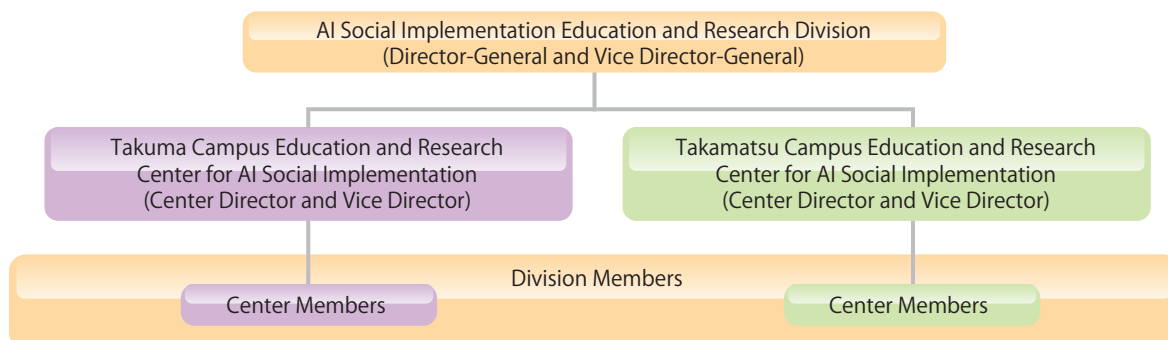


# AI Social Implementation Education and Research Division

## ◇ AI Social Implementation Education and Research Division Organization Chart



Since the conclusion of an agreement of cooperation between the Matsuo Laboratory at the University of Tokyo (Mitoyo, Kagawa) and the National Institute of Technology Kagawa College (NITKC) on August 30, 2018, NITKC has been actively promoting development and social implementation of AI through Deep Learning Methods.

April 1, 2020, the NITKC AI Social Implementation Education Research Division was established to foster creative ideas amongst all the National Institute of Technology college students and researchers who conduct basic and applied research with AI; through the practice of social implementation, joint research with regional companies, and by human resource development, participants will have the power to implement their ideas in society.

The division will actively provide educational programs about AI and its underlying data science courses to all the students of the National Institute of Technology colleges by using the educational and research resources of the University of Tokyo's Matsuo Laboratory and NITKC's research achievements.



Conclusion of the Agreement of Cooperation between Mitoyo Matsuo Laboratory of the University of Tokyo and NITKC (August 2018, Mitoyo City Hall)

The NITKC AI Social Implementation Education and Research Division will promote education through the following activities:

- (1) Research Development for AI student researchers.
- (2) Community Education (social implementation) in cooperation with local areas.
- (3) Accessible Lectures (visiting and remote) related to human resource development in AI technology
- (4) Regional Cooperation with the Mitoyo AI Social Promotion Organization (MAiZM)\*

The NITKC AI Social Implementation Education and Research Division will establish the "Takuma Campus Education and Research Center for AI Social Implementation" and the "Takamatsu Campus Education and Research Center for AI Social Implementation" to promote AI education and social implementation on each campus.

\*The Mitoyo AI Social Promotion Organization (MAiZM) <https://www.maizm.or.jp/>

On April 1, 2019, MAiZM was established in cooperation with Prof. Yutaka Matsuo from the University of Tokyo and with NITKC. The organization will be actively promoting AI(DL) education for NIT students and AI(DL) applications.

## ◇ Members

AI Social Implementation Education and Research Division	Director-General	MISAKI, Yukinori (Professor, Department of Electronic Systems Engineering)
	Vice Director-General	TOKUNAGA, Hidekazu (Professor, Department of Electro-Mechanical Systems Engineering)
Takuma Campus Education and Research Center for AI Social Implementation	Center Director	MISAKI, Yukinori (Professor, Department of Electronic Systems Engineering)
	Center Vice Director	IWAMOTO, Naoya (Senior Lecturer, Department of Electronic Systems Engineering)
Takamatsu Campus Education and Research Center for AI Social Implementation	Center Director	TOKUNAGA, Hidekazu (Professor, Department of Electro-Mechanical Systems Engineering)
	Center Vice Director	MURAKAMI, Yukikazu (Associate Professor, Department of Electrical and Computer Engineering)