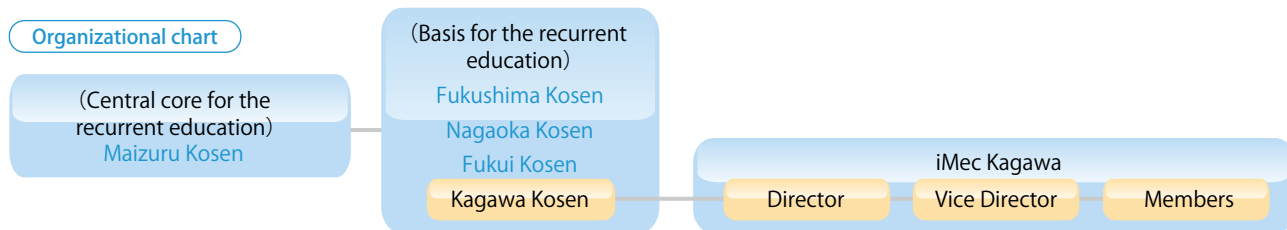


Infrastructure Maintenance Educational Center

Infrastructure Maintenance Educational Center at Kagawa Kosen (iMec Kagawa) was established on April 1, 2020. It was aimed to carry out recurrent education and to develop human resources on maintenance and management of civil infrastructure using the education research resources at Kagawa Kosen.



The deterioration of civil infrastructure such as roads and bridges has become social issues, and it is necessary to develop engineers for maintenance. iMec Kagawa offers practical education which combines e-learning and lecture-style courses on maintenance, skill training courses on damage inspections and non-destructive tests and experience-based learning courses using educational materials from actual deteriorated bridges. These educations are offered to students, local government officials and private-sector engineers. Those who have completed the prescribed course will be given qualifications such as the bridge inspection engineer registered with the Ministry of Land, Infrastructure, Transport and Tourism. 'The development of KOSEN-type academic-industrial cooperation for infrastructure maintenance human resource development' has been adopted by 'Sustainable industry-academia joint human resource development system construction project' supported by the MEXT (Ministry of Education, Culture, Sports, Science and Technology) from FY 2019 to FY 2023. Kagawa Kosen builds the basis for the recurrent education in community in collaboration with Maizuru Kosen, Fukushima Kosen, Nagaoka Kosen and Fukui Kosen.



Facilities

Following structural members collected from actual deteriorated bridges were placed in practical training facility for infrastructures.



Overview of the space



Reinforced concrete slab



Reinforced concrete girder



Steel rivet girder



Steel truss bridge and supports



Non-destructive inspection by electromagnetic wave radar

Staffs

Director	HAYASHI, Kazuhiko (Associate Professor, Civil Engineering Department)
Vice director	HASEGAWA, Yuki (Senior Lecturer, Civil Engineering Department)
Member	MATSUMOTO, Masayuki (Assistant Professor, Civil Engineering Department)